

# Introducing the Fishawack Group

*Standing out from the crowd*

# Who am I? A brief introduction

The image shows a LinkedIn profile page for Diane Sutherland. At the top, there is a search bar with the name "Diane Sutherland" and a magnifying glass icon. To the right of the search bar are navigation links: "Invite Colleagues", a profile picture of Diane, "Diane", "Home", a chat icon, a notification bell, a help icon, and a settings gear. Below the search bar is a dark header area. On the left, there is a button "Add Cover Photo" with a camera icon. In the center is a profile picture of Diane Sutherland, a woman with short blonde hair wearing a blue patterned top. To the right of the profile picture, the name "Diane Sutherland" is displayed in large white text, followed by "Group Professional Devel..." in smaller white text. Further right are two buttons: "Edit Profile" with a pencil icon and "View Org Chart" with a network icon. Below these are two more buttons: "Activity log" with a list icon and a three-dot menu icon. Below the header is a horizontal navigation bar with tabs: "Timeline", "About", "Followers", "Groups", and "More" with a dropdown arrow. Below the navigation bar is a search bar with the text "Search Diane's posts, photos and tags". To the left of the main content area is an "About" section with a person icon, the text "About", and a link "Org chart". The "About" section contains the text: "In medcomms since 1998; Editorial & Client Service Director roles at FW, taking on GPDD role in 2012. Work with managers & Dept Heads to identify & address training needs & develop career pathways." and an "Edit" link. To the right of the search bar is a "Create post" section with a pencil icon, the text "Create post", and a "Live video" button with a video camera icon. Below this is a profile picture of Diane and the text "What's on your mind?". At the bottom of the "Create post" section are four buttons: "Add Photo/Vi..." with a photo icon, "Add Activity" with a smiley face icon, "Add Location" with a location pin icon, and a three-dot menu icon. At the very bottom of the "Create post" section is a dropdown menu showing "Fishawack Group of Comp..." and a "Post" button.

# Fishawack Group: 18 years on...



One of the largest, **independent** global specialist healthcare communication agencies >600 staff



**Preferred partner** to 18 of the top 20 pharma/biotech companies



Enlightened company culture of **collaboration and entrepreneurialism**

FISHAWACK communications

INDICIA MEDICAL

FISHAWACK FACILITATE

FISHAWACK INDICIA

JK Associates Inc  
A Medical Communications Company

C CARLING  
A PHARMACEUTICAL GROUP COMPANY

HEALTHCIRCLE  
A PHARMACEUTICAL GROUP COMPANY

blue latitude<sup>®</sup> health

DUDNYK

# Who we work with - the top pharmaceutical and biotech companies around the globe

abbvie

 NOVARTIS

 Roche

argenx 

CSL Behring

 MERCK

 Boehringer  
Ingelheim

 Pfizer

SANOFI 

AstraZeneca 

ALEXION

 ACTELION

MERCK

 gsk

 santhera

 Biogen

Bioverativ   
A SANOFI COMPANY

AMGEN

Shire

 ucb

# What we work on – a wide range of therapy areas including...

Neurology – MS; Alzheimer's

Sexual health

Allergies

Diabetes



Cardiology

Respiratory

Ophthalmology

Dermatology

Oncology

Gastroenterology

Haematology

Rare diseases

Rheumatology

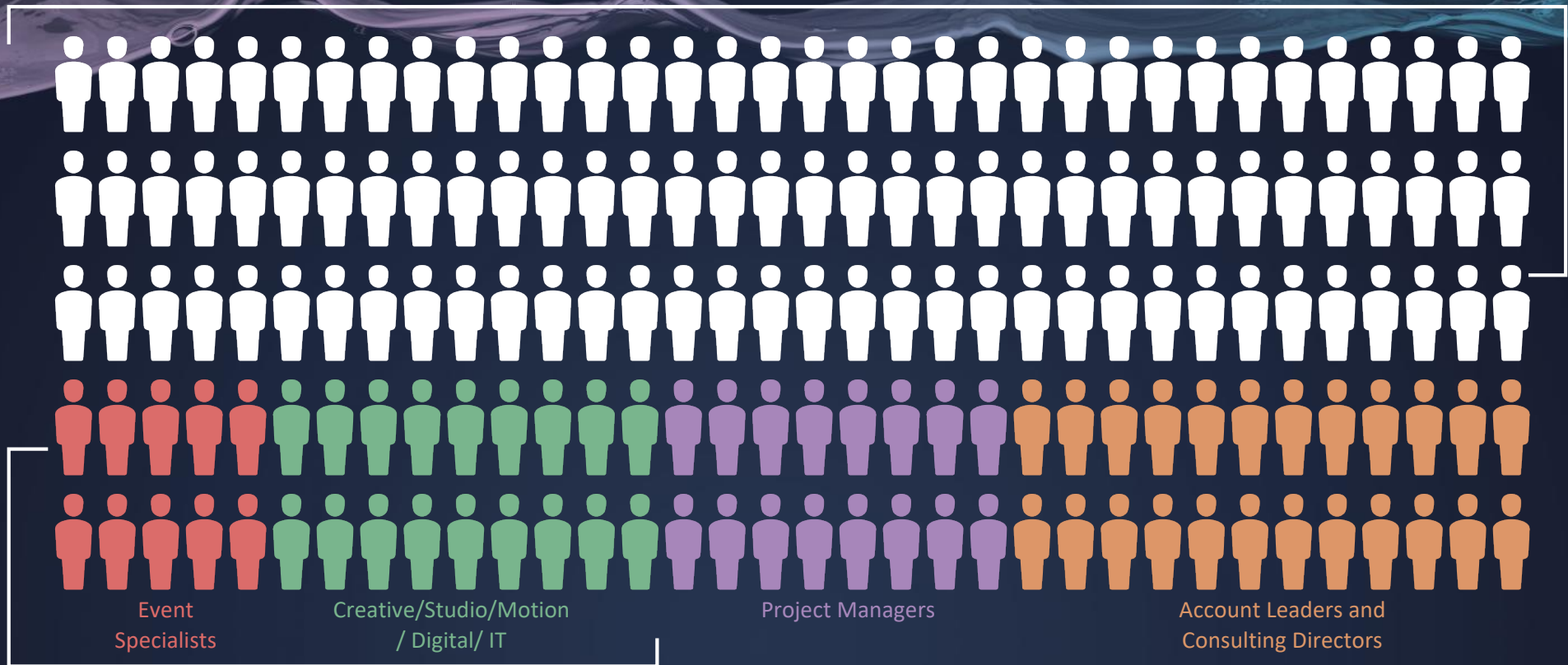
Infectious diseases – vaccines; anti-microbials



# Our Fishawack Medical Communications Group

## >230 staff

~60% scientific medical writers & editorial services, of whom 90% hold PhDs / higher degrees



### Global capabilities offered locally

BScs, MScs,  
PhDs,  
PharmDs,  
MDs

Pharma experience in medical affairs, marketing,  
publications management & product  
development

Medical publishers, CMPPs, AMWA,  
TIPPA, ISMPP committee members

Physicians, nurses,  
pharmacists

# What do we have to offer new recruits? A large & talented team of scientific writers to work with and learn from...

500+ years of medical writing experience across >25 agencies

1 month

20+ years



- Fresh
- New ideas



- Experienced
- Broad knowledge on different project types and therapy areas



...a well established training programme delivered through a new learning management system...



**SUPPORTING TRAINING,  
ENHANCING PROFESSIONAL SKILLS**



external  
trainers –  
tailored to  
team needs

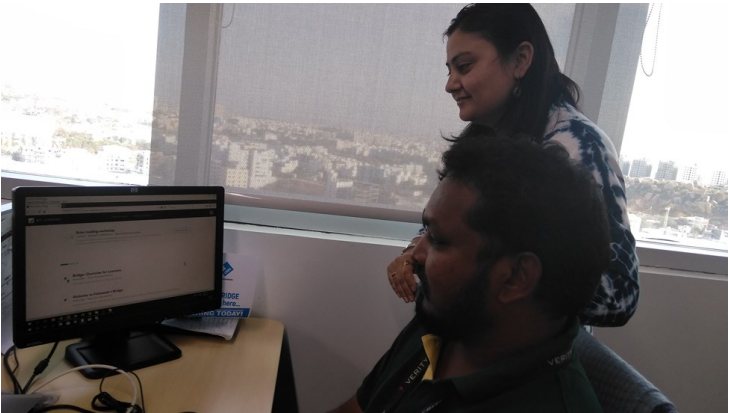
courses –  
tailored to  
individual  
needs

- Centralisation of training resources
- Self-learning when you need it
- Flexible learning: available on any device
- Track-able learning for personal development plans



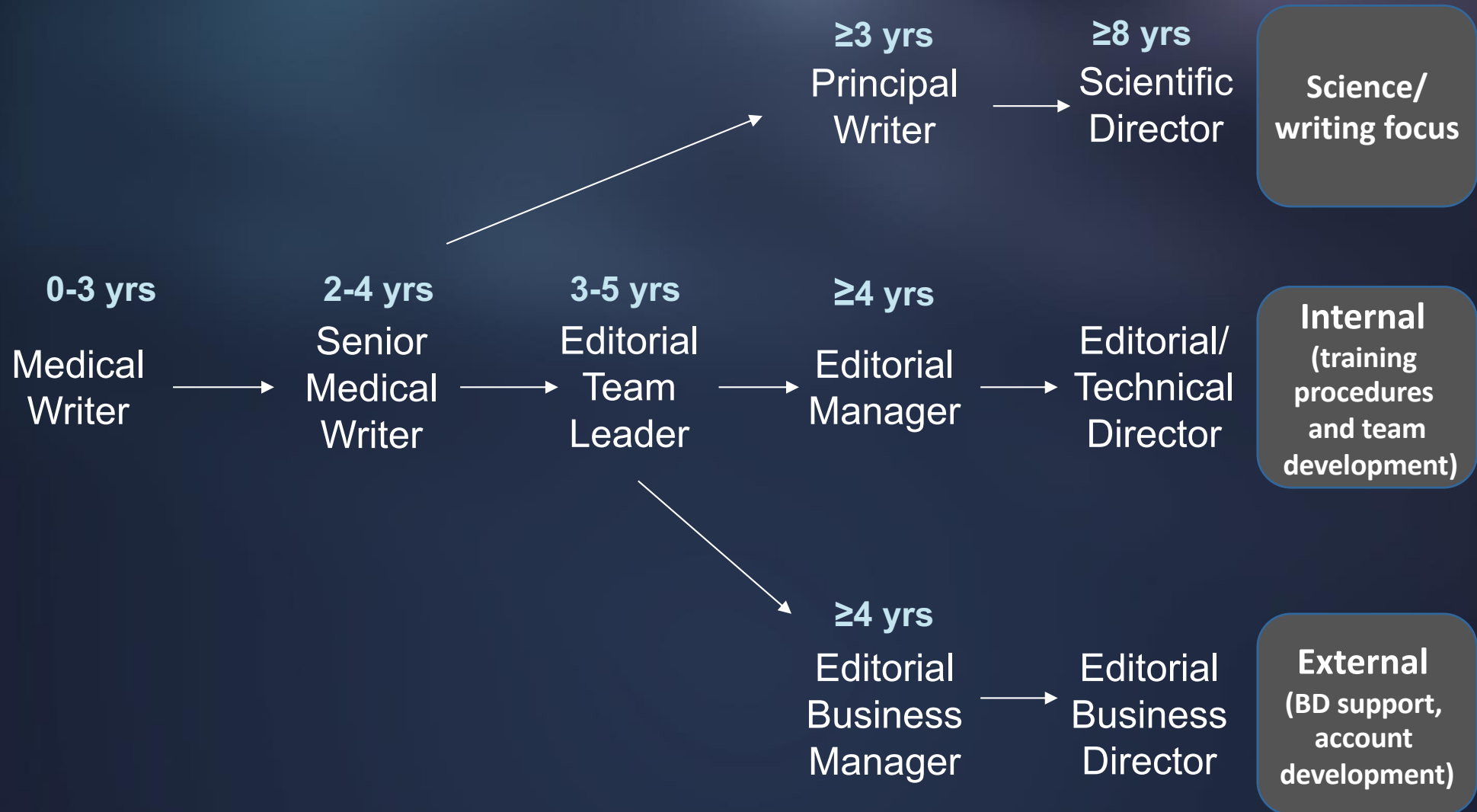


# Footsteps, posters, balloons, webkeys and sweets in all offices on launch day



**BE EVEN GREATER**

# A uniquely diverse medical writing career pathway

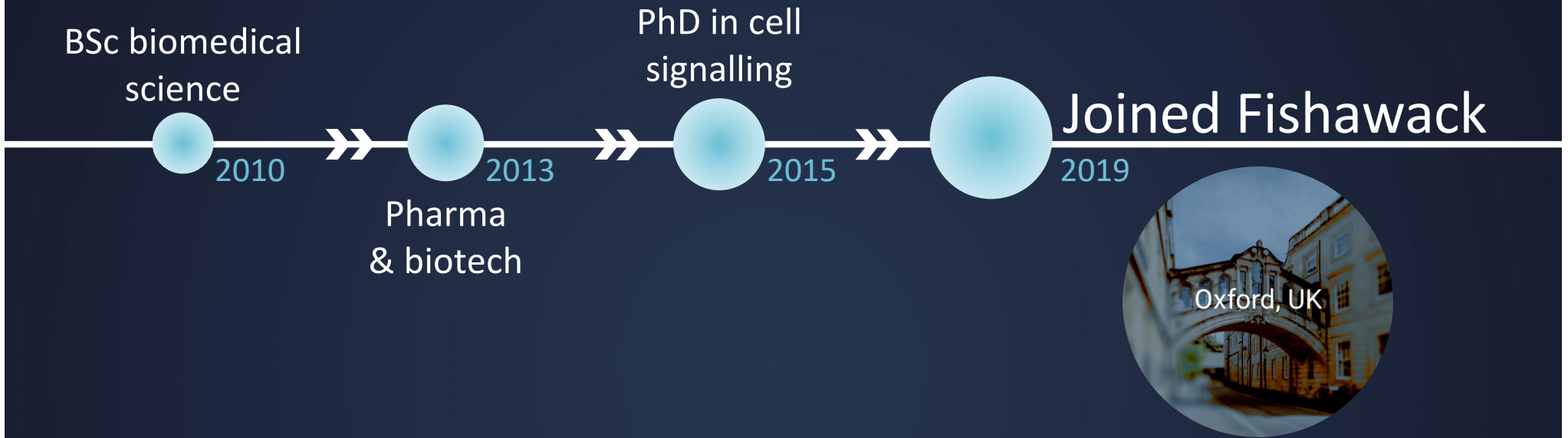


## Our philosophy

Fishawack represents a set of values and a vision:

- Be the best at what we do
- Show clients the same respect we wish to be shown
- Demonstrate honesty and integrity
- Express individuality whilst working within the professional standards

# Bianca Paris – my journey to Fishawack





# Bianca Paris – my journey to Fishawack

At Fishawack I have...

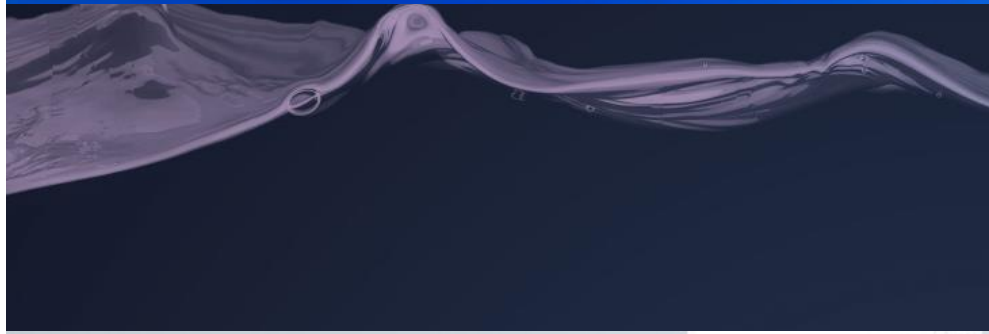
- Met lots of lovely new people!
- Learned about new therapy areas
- Received hands-on training to develop writing skills in publications:
  - Research and review articles, peer review responses
  - Abstracts, posters and slide decks for congress





# JOIN OUR TEAM!

AND START YOUR FISHAWACK JOURNEY



SCIENTIFIC CURIOSITY,  
like-minded & a good supply  
COLLEAGUES OF COFFEE

HELP FUEL MY MEDICAL WRITING

# DRIVE.

THE FISHAWACK TEAM  
are always there to provide the support I need  
TO FLEX & DEVELOP  
my writing muscles.

FISHAWACK  
group of companies

MED COMMS  
*with personality*



Jess.

- Jess, Senior Medical Writer

To find out more about starting your Fishawack journey, visit:  
[www.fishawack.com/contact-us/recruitment](http://www.fishawack.com/contact-us/recruitment)

Being a medical writer  
AT FISHAWACK  
means CONSTANTLY  
that i am > LEARNING  
ABOUT INNOVATIONS IN  
science AND medicine.  
PLUS Im' part of a GREAT TEAM FOCUSED ON  
DELIVERING  
TOP-NOTCH WORK for our  
CLIENTS.

FISHAWACK  
group of companies

MED COMMS  
*with personality*



Sarah

Sarah, Medical Writer

To find out more about starting your Fishawack journey, visit:  
[www.fishawack.com/contact-us/recruitment](http://www.fishawack.com/contact-us/recruitment)